

# Dental e-catalog

Global healthcare, Endless innovation, **A better world.**

PAPAYA 3D  
Cone Beam Imaging System

 GENORAY

# Software THEIA

Powerful 3D image viewer for accurate diagnosis

**Thumbnail View** : Check all images at once

Scene Mode

Select Template type (tap)

3D Preview

The screenshot displays the Theia software interface, which is a digital X-ray solution. On the left, there is a 'Patient List' panel with a search bar and a 'Recently Opened' section. The main area is divided into several panels: 'Panorama' (showing a panoramic X-ray), 'Ceph' (showing cephalometric X-rays), 'IO Sensor' (showing a grid of small X-ray thumbnails), 'IO Camera' (showing a grid of small X-ray thumbnails), 'CT' (showing a 3D volume rendering of a jaw), and 'Photo' (showing clinical photos). The interface includes various navigation and selection tools, such as 'Scene Mode' and 'Select Template type (tap)'. A '3D Preview' window shows a 3D model of a jaw. The bottom right corner features a list of 'Features' and a section for '\*3D Volume Rendering'.

**Features**

- MPR (Multi-Planar Formatting)
- Curved MPR
- TMJ Viewer
- External Output
- Easy Measuring tools
- Implant planning
- Support for DICOM 3.0

**\*3D Volume Rendering**

: Various volume rendering options such as Gray, X-ray, MIP and etc provide 3D image visualization

**Browsed Patient List**

**Selected Patient : Thumbnail**



# PAPAYA 3D PREMIUM PLUS

4 in 1 (CBCT, Panoramic, Cephalometric, Model Scanning) system



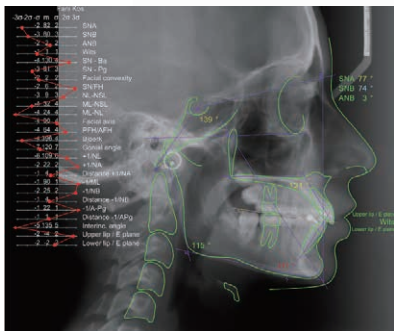
## Cephalometric Sensor

### SCAN CEPH

#### ONE-SHOT CEPH (\*Optional)

Minimizes Motion Artifact and captures high-resolution images

## Tracing Software (\*Optional)



## Two Sensors

### CBCT Sensor

Large FOV (23x24cm)

### Panoramic Sensor

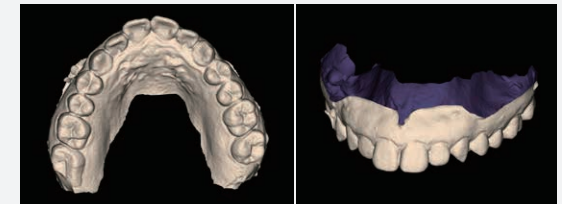
## Multi Focus

Selects automatically the most optimized image

## Model Scan Mode

Converts CT images into STL

Temporary prosthesis, Implant, Orthodontic treatment



## Open-and-closed chinrest system

offers a small foot print suitable for areas with limited space.



## Smart Positioning

By creating a database based on the patient-specific exposure conditions and positioning of the previous images, you can create fast and convenient scans without any additional adjustments.



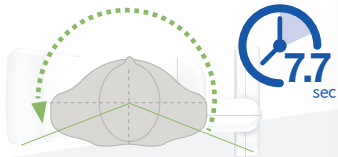


# PAPAYA 3D PLUS

Combination Dental X-ray Imaging System

## Fast Scan Time

- Minimal radiation exposure with a 7.7 seconds fast shooting time.
- Minimize motion artifacts during exposure to produce clear, accurate images



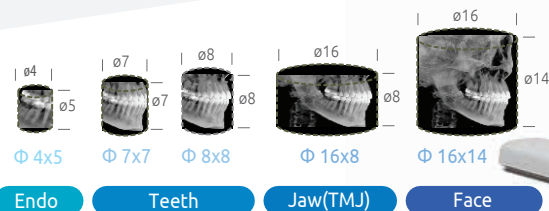
## Auto-Stitching Technology (\*Optional)

Auto-Stitching, a function (algorithm) that automatically calibrates and compensates for the patient's movement at the time of shooting, combines two images to reconstruct an optimal image.



## Multi-FOV Selection

Multi-F.O.V. selection enables accurate scanning whilst keeping dose levels to a minimum.



# PAPAYA PLUS

Panoramic / Cephalometric / Tomography

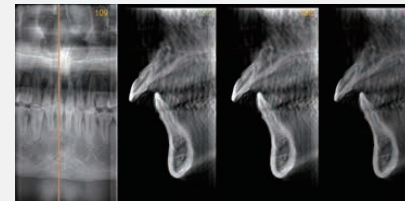
## Multi-Focus function

can overcome patient mis-positioning. The user is therefore able to find the most optimally -focused choice from a selection of images.



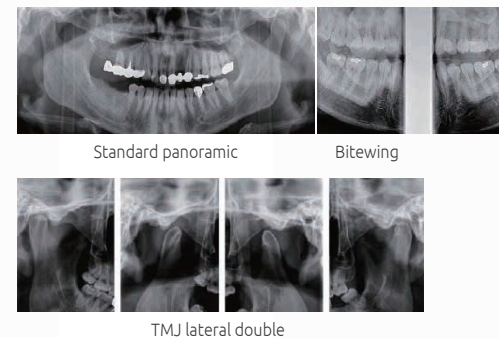
## Tomography Imaging (\*optional)

PAPAYA CUST is in a 3D imaging function that provides cross-sectional information for implant preparation.



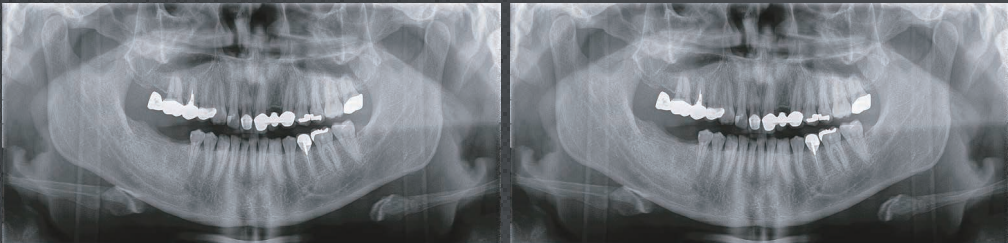
## Exposure Programs

PAPAYA PLUS supports various kinds of exposure program, and they fulfill diagnosis needs. Lateral, AP, PA, Water's view, Submento vertex, and carpus are supported.



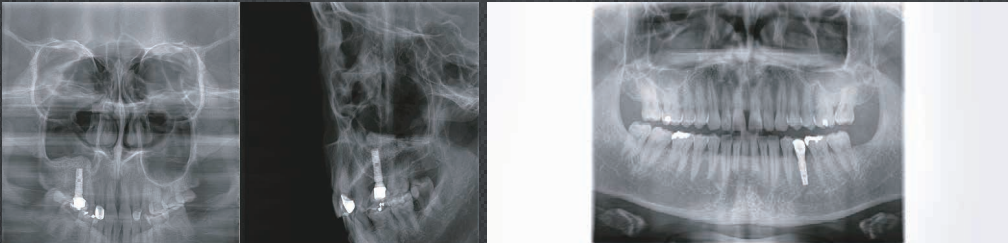
# PAPAYA series

## Clinical Images



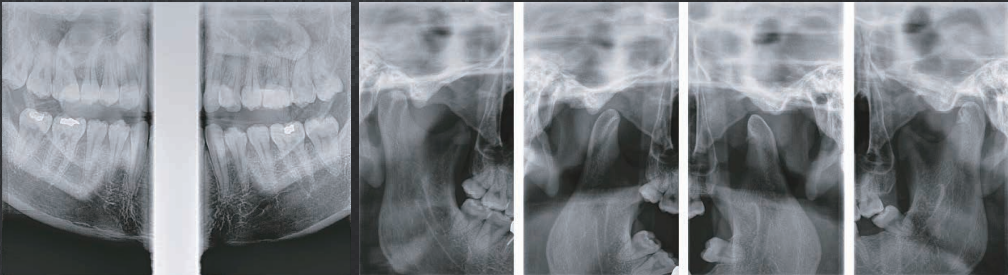
Standard panoramic

Orthogonal panoramic



Sinus PA / Sinus lateral midsagittal

X-ray segment

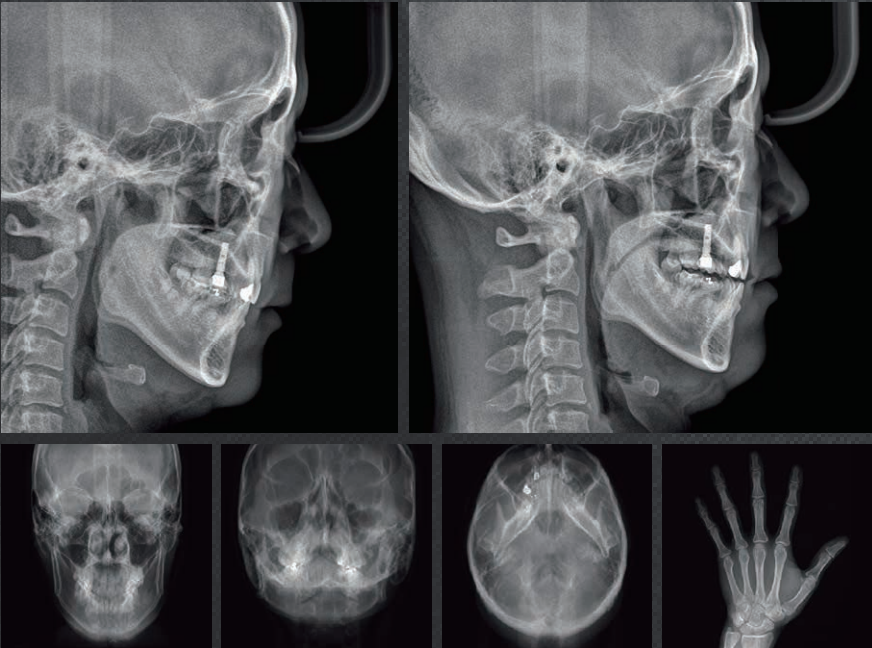


Bitewing

TMJ lateral double



Large FOV CT - 23 x 24 Full Skull Mode





# Port-X IV

Innovative Portable X-Ray, All in One



**1.6 kg** weight

**0.4 mm** Focal spot

**70 kv** Tube voltage

## Compact and sharp portable X-ray

- Ergonomic design for one handed operation
- Lightweight and compact due to optimal tank design
- Image viewer with clear IPS LCD Screen IPS
- Winner of Red Dot Award for Design 2017

## All In one portable X-ray

- Straightforward process for image capture with intuitive icons and track ball
- Easy data transmission to PC & Mobile App and firmware upgrades via Wi-Fi
- Multiple language support
- Patient and data management capabilities without a PC

## Superior image quality

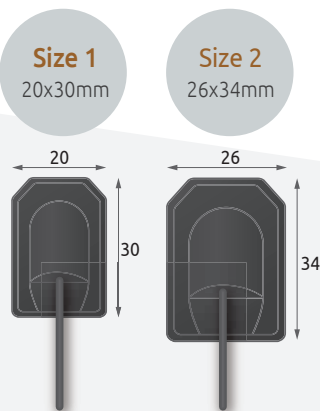
- Crystal clear images from 0.4mm Focal spot and 70kv X-ray Tube



USB 2.0

# GIX-1

Digital Dental Intra-Oral Sensor



CMOS area image sensors  
USB interface type  
Monitoring photodiode  
Waterproof

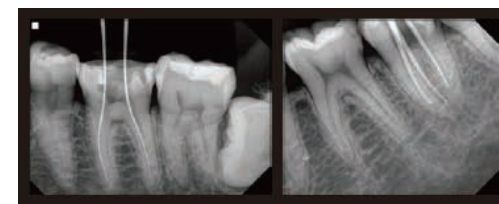
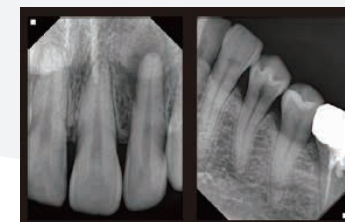
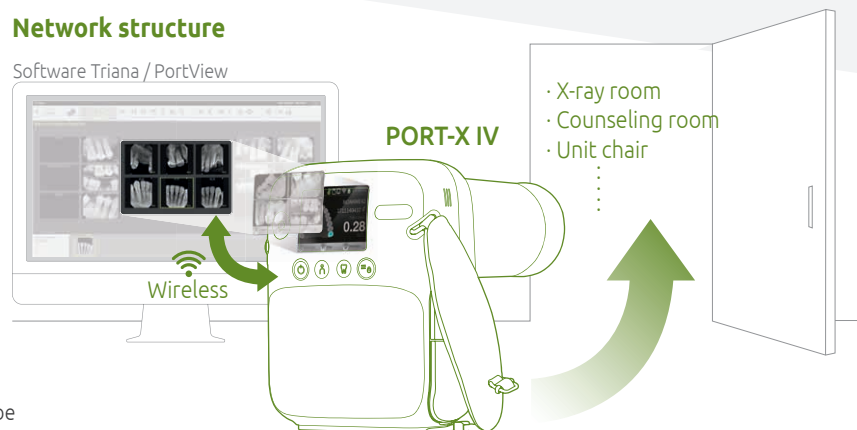
- Pixel size : 20x20um
- High resolution : 20Lp/mm typ
- Dynamic range : 57 db (size1) / 75 db (size2)
- USB 2.0 interface
- Waterproof : equivalent of IP67

Directly connect to Port-X IV for instant images

Portable X-ray + I/O sensor integrated system  
Immediate image display on LCD with I/O sensor connections

## Network structure

Software Triana / PortView



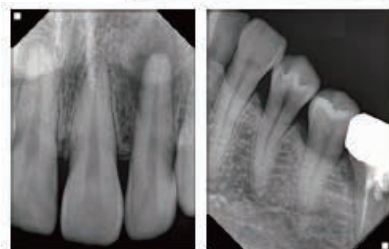
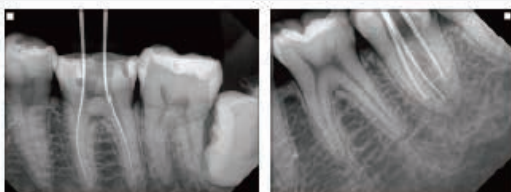
# Port-X IVe

Super Light Portable X-ray



**1.6 kg**  
weight

- Compact size, Light weight
- Portable camera type
- Easy to control UI
- Superior image quality

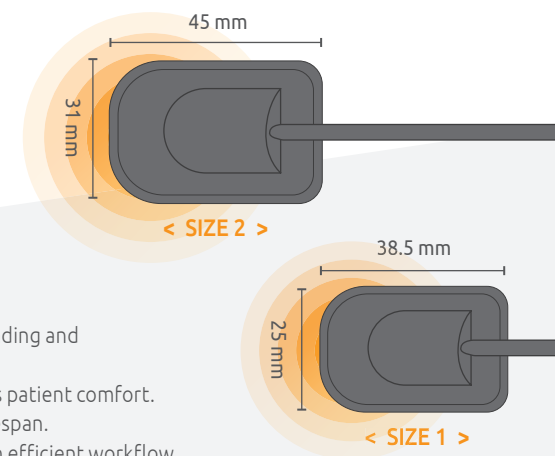


# GTIS

Digital Dental Intra-oral Sensor

- Advanced CMOS sensor technology
- Outstanding image quality
- Wide dynamic range with consistent quality
- Durable material and components
- Slim and patient-friendly design

GTIS is with the advanced technology, providing outstanding and consistent image quality for accurate diagnosis. With ergonomic design and a flexible cable, it maximizes patient comfort. Long-lasting materials and components increase the lifespan. PORTVIEW imaging software is fast and easy to use with efficient workflow.



SPECIFICATIONS	SIZE 1	SIZE 2
Sensor size	38.5 x 25 x 5 mm	45 x 31 x 5 mm
Active area	30 x 20 mm	36 x 26 mm
Pixel matrix (HxV)	1500 x 1000 px	1800 x 1300 px
Pixel pitch (HxV)	20 µm	
Scintillator type	CsI	
Interface	Direct USB, USB 2.0	
AD Conversion	16 bits	
Ingress Protection	IP68	
Cable length	2.8m	



## DVAS-C

Chair type (Fixed)

Chair type (Foldable)



## DVAS-M

Mobile type



## DVAS-W

Wall-mount type

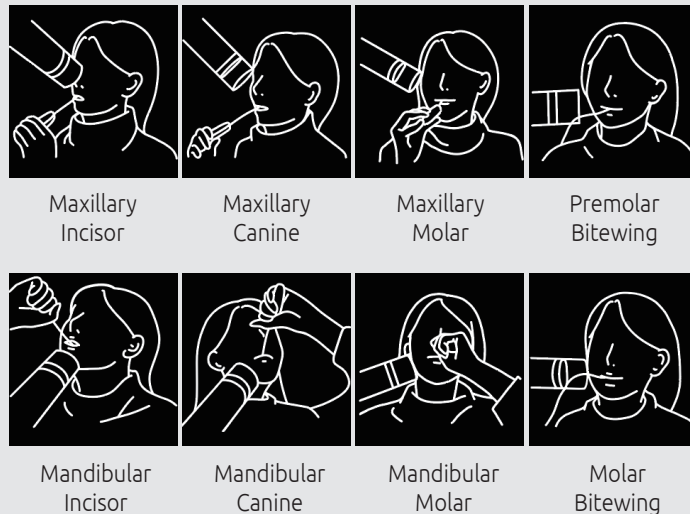




# DVAS Features

## Guide mode

When the button is pressed, the exposure position guide automatically appears based on the selected angle



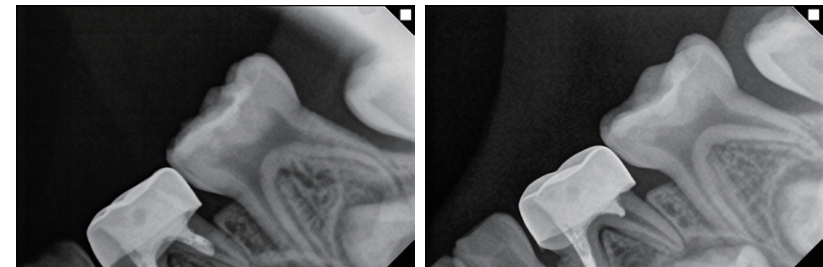
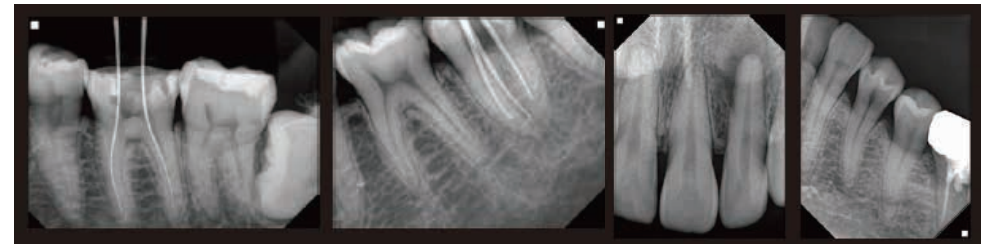
## LED Pointer

The LED for the X-ray position guide is activated on the patient



Touch screen

## Clinical images



Focal spot 0.8mm

DVAS Focal spot 0.4mm



**GENORAY Co.,Ltd.**

**T** +82-31-5178-5500  
**E** [genoray@genoray.com](mailto:genoray@genoray.com)  
**W** [www.genoray.com](http://www.genoray.com)

**GENORAY EU GmbH**

**T** +49-30-50969498  
**E** [info@genorayeurope.com](mailto:info@genorayeurope.com)  
**W** [europe.genoray.com](http://europe.genoray.com)

**GENORAY Türkiye**

**T** +90-216-463-57-37, +90-216-463-57-53  
**E** [genorayturkiye@genoray.com](mailto:genorayturkiye@genoray.com)  
**W** [turkiye.genoray.com](http://turkiye.genoray.com)

**GENORAY America Inc.**

**T** +1-855-436-6729  
**E** [inquiry@genorayamerica.com](mailto:inquiry@genorayamerica.com)  
**W** [www.genorayamerica.com](http://www.genorayamerica.com)

**GENORAY Japan**

**T** +81-45-620-4971  
**E** [Info@genorayjapan.co.jp](mailto:Info@genorayjapan.co.jp)  
**W** [www.genorayjapan.co.jp](http://www.genorayjapan.co.jp)

**GENORAY Shanghai**

**T** +86-021-6785-8538  
**E** [genoraychina@genoray.com](mailto:genoraychina@genoray.com)  
**W** [www.genoray.com.cn](http://www.genoray.com.cn)

\* This X-ray unit may be dangerous to patient and operator unless safe exposure factors and operating instructions are observed.